



SAFETY
INFORMATIVENESS
COMFORT

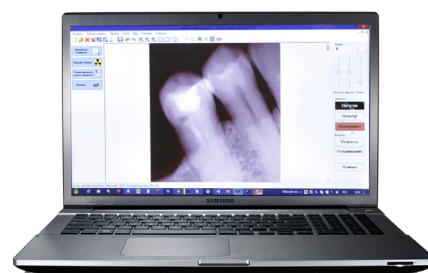
PORTABLE X-RAY DIAGNOSTIC APPARATUS "PARDUS-R"

SAFETY for doctor and patient

Extremely low radiation dose, provided:

- reliability of internal source protection
- small exposition

The effective dose for one snapshot is 0.3 mkSv. *

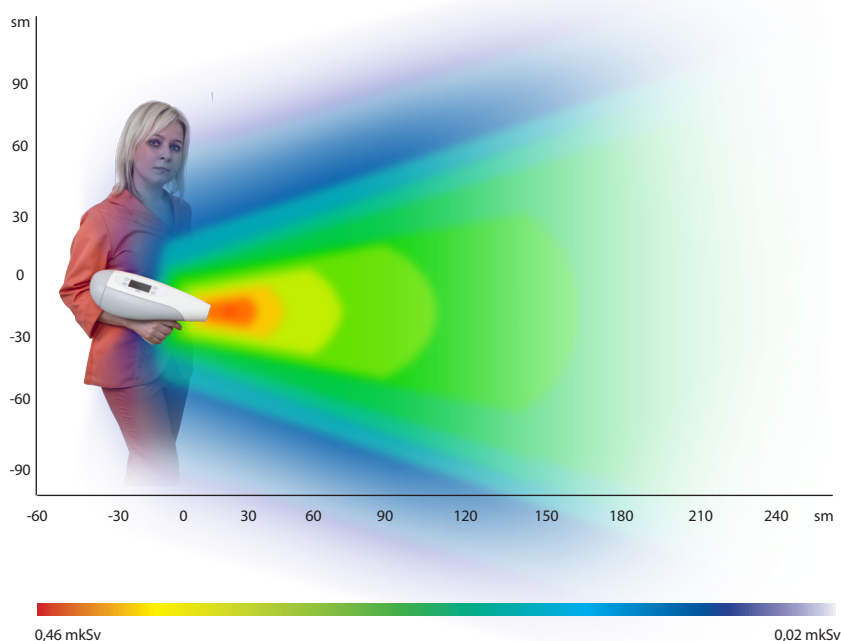


**HIGH quality image at maximum
CONVENIENCE for the doctor and
the patient.**

Apparatus "PARDUS-R" intended to obtain X-ray images of individual teeth and portions of the jaw of the patient directly in the dental chair.

The X-ray image is formed using the digital sensor and instantly displayed on the PC screen.

The original scheme and configurable shooting modes guarantee high quality X-ray image.



*On the basis of data of the control protocol of apparatus characteristics.

MOBILE X-RAY DIAGNOSTIC - NECESSARY ATTRIBUTE OF STOMATOLOGY XXI CENTURY!

APPARATUS "PARDUS-R" IS COMPATIBLE WITH ALL DIGITAL DEVICES AND X-RAY FILM

Main technical characteristics of apparatus "PARDUS-R"

The range of high-voltage, kV	55-65
Anode current (middle), mA	0,15
The diameter of the focal spot, not more than, mm	0,2
Exposition time, sec	0,1-0,3
The minimum number of shots from a fully charged battery	250
The weight of the apparatus, kg	2,1

CONVENIENT IN USE:

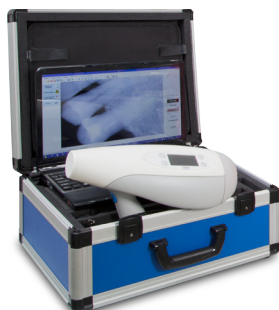
- Ergonomic design allows for one-hand research
- Low weight
- Preset modes
- Additional settings shooting modes by the user

APPLICATION AREA:

- Stomatology
- Implantology
- Oral and maxillofacial surgery
- Pediatric dentistry
- "Outing" dental care

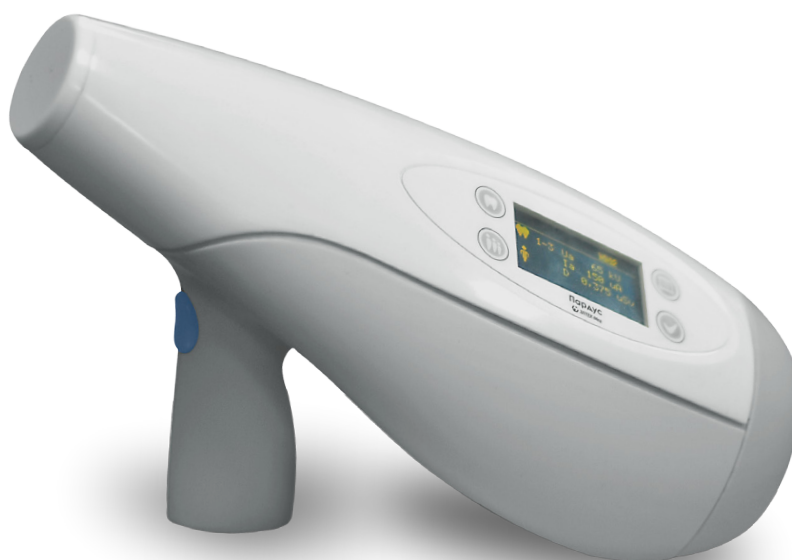
CONTENTS OF DELIVERY:

- The apparatus "PARDUS-R"
- AC-DC adapter
- Passport, Instruction Manual



ADDITIONAL EQUIPMENT:

- Protective aprons



The manufacturer provides warranty, post-warranty and service of the apparatus.

Warranty period - 2 years.

Staff training, advisory assistance.

